

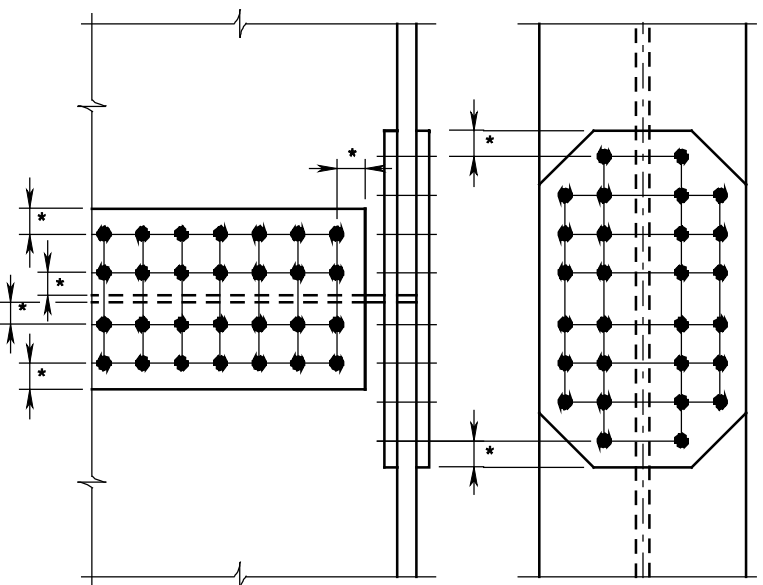
MAIN MEMBER EDGE DISTANCE

ISSUED: 2009

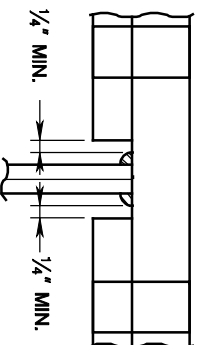
PLATE
3.9-20

NOTE

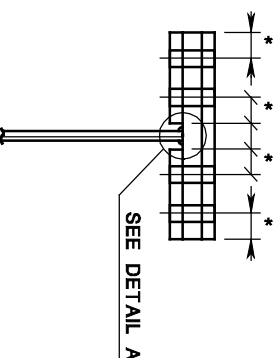
EDGES NOTED THUS: * TO BE 1 3/4" FOR 3/8" DIA. BOLTS & 2" FOR 1" DIA. BOLTS



TYPICAL FIELD SPLICE



DETAIL A



NOTE

ALL MAIN LOAD CARRYING CONNECTIONS SHOULD BE DESIGNED WITH A MINIMUM OF 1/8"(1/4" PREFERRED) ADDITIONAL EDGE DISTANCE BEYOND THE AASHTO MINIMUM REQUIREMENTS. THIS WILL PROVIDE A TOLERANCE FOR PUNCHING, DRILLING & REAMING.